



MITSUBISHI ELECTRIC AUTOMATION (THAILAND) CO., LTD.

Bang-Chan Industrial Estate No. 111 Moo 4, Serithai Rd., T.Kannayao, A.Kannayao, BKK 10230 Thailand
 Tel: (66) 2517-1326, (66) 2919-9873 Fax: (66) 2517-1328 URL: www.meath-co.com E-mail: support@meath.co.th

บริษัท มิตซูบิชิ อิเล็กทริก ออโตเมชัน (ประเทศไทย) จำกัด

นิติบุคคลสาขารวมบางชั้น เลขที่ 111 หมู่ 4 ถนนเสรีไทย แขวงคันนายาว เขตคันนายาว กทม. 10230
 โทรศัพท์: (66) 2517-1326, (66) 2919-9873 โทรสาร: (66) 2517-1328 URL: www.meath-co.com E-mail: support@meath.co.th

MOTOR SPECIFICATION SHEET

MODEL : SF-PRB 11kW 4P
 USED FOR : 380V 50Hz
 MANUFACTURER : MITSUBISHI ELECTRIC CORPORATION

DESCRIPTION	DETAIL
PHASE	3
MODEL NAME	SF-PRB
RATED OUTPUT	11 kW
POLE	4
CODE	
OUTLINE DRAWING NO.	BD39187-*
RATED VOLTAGE (V)	380
RATED FREQUENCY (Hz)	50
RATED CURRENT (A)	21.5
RATED SPEED (min ⁻¹)	1460
RATED EFFICIENCY	92.3%
EFFICIENCY CLASS	IE3
THERMAL CLASS	130 (B)
RATING	S1 (CONTINUOUS)
ENCLOSURE CONSTRUCTION	TOTALLY ENCLOSED FAN COOLED
DEGREES OF PROTECTION	IP44
METHOD OF COOLING	IC411
FRAME NO.	160M
WEIGHT (kg)	126
STANDARD	JIS C 4213, JEC-2137-2000
INSTALLATION	FOOT MOUNTED
ROTATION	CCW (VIEWED FROM SHAFT END)
BEARING	LOAD SIDE : 6309ZZ OPPOSITE SIDE : 6309ZZ
BEARING GREASE	UREA GREASE
NOISE (dB.A)*	64
VIBRATION	V15
CIRCUMSTANCE CONDITION	AMBIENT TEMPERATURE : -20 ~ +40°C AMBIENT HUMIDITY : 95% RH (NO CONDENSATION) ABOVE SEA LEVEL : 1000m OR BELOW ENVIRONMENT : NO CORROSIVE/EXPLOSIVE GAS, NO STEAM OR CONDENSATION, MINIMAL DUST.
COLOR	MUNSELL N7 (GRAY)
TERMINAL BOX	NO. OF LEAD WIRES : MOTOR = 6 , BRAKE = 3 SOURCE CONNECTION : LEAD WIRES
SHAFT SWING	≤0.05mm
MATERIAL	FRAME : STEEL PLATE BRACKET LOAD SIDE : ALUMINIUM OPPOSITE SIDE : CAST IRON SHAFT : CARBON STEEL STATOR CORE : ELECTRICAL STEEL WIRE : ENAMELLED COPPER MAGNET WIRE ROTOR CORE : ELECTRICAL STEEL CONDUCTOR : ALUMINIUM TERMINAL BOX : STEEL PLATE PAINTING : ACRYLIC RESIN
BRAKE	TYPE : TB-A15H (DC) RATED BRAKING TORQUE : 150 N.m POWER SUPPLY UNIT : PROVIDED BY BUILT INTO MOTOR.
PRODUCTION COUNTRY	JAPAN

*Value indicates representative value, not guaranteed value.

Specifications subject to change without notice.

SPECIFICATION SHEET NO.				
SS-M-3695-A				

TYPE SF-PRB SUPER-LINE THREE-PHASE INDUCTION MOTOR

OUT LINE
DIMENSION IN mm

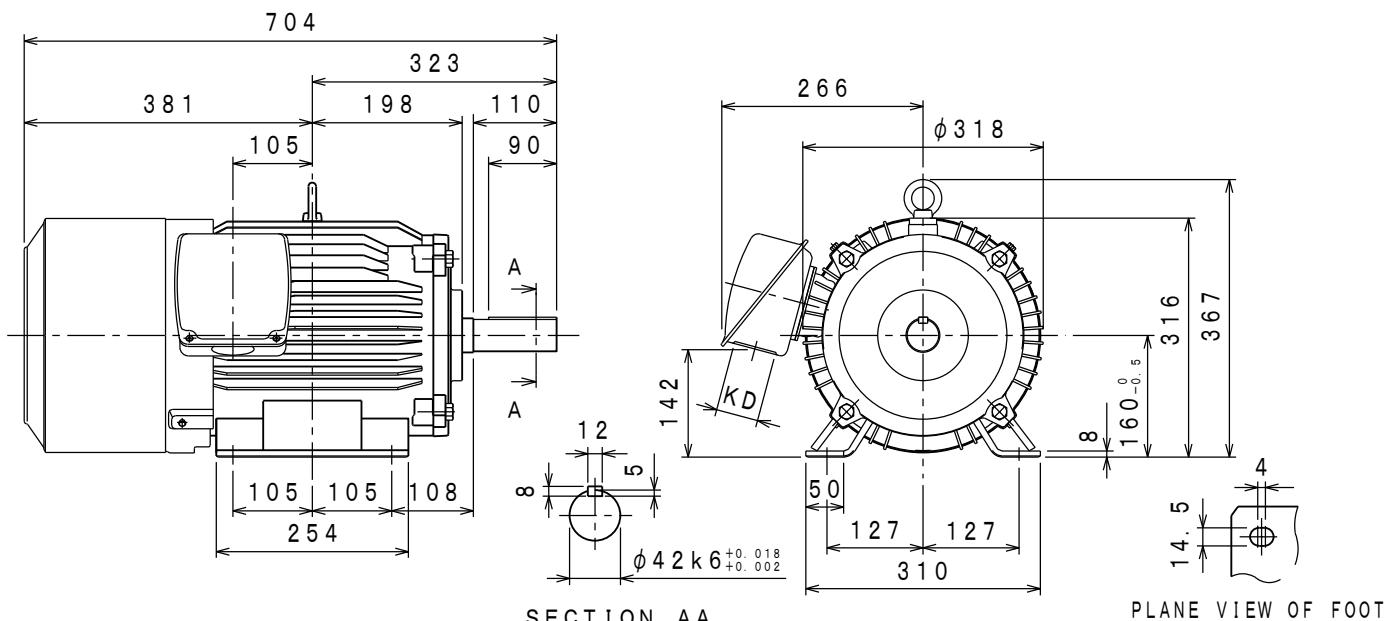
INDOOR USE TYPE

TOTALLY ENCLOSED FAN COOLED
 PROTECTION DEGREE: IP44 (BRAKE: IP20)
 COOLING METHOD: IC411
 WITH TYPE TB-A15 MAGNETIC BRAKE
 BRAKING TORQUE 150N·m FRAME NO. 160M

CUSTOMER _____
 USER _____
 FOR _____
 CUST' S ORDER NO. _____
 QUANTITY _____ UNIT (S) _____
 MFG ORDER NO. _____

YOUR ORDER	kW · POLES	VOLT	HERTZ	MASS kg/UNIT	STYLE NO.
	11kW 4P	380V	50Hz	126	

IE Code-Rated Eff	
11kW 4P	IE3-92.3%



SECTION AA

PLANE VIEW OF FOOT

RATING	TH. CLASS	AMB. TEMP	BEARINGS		NO. OF TERMINALS		VIEWED FROM DRIVE END		COLOUR	KD	BRAKING TORQUE
			LOAD SIDE	OPPOSITE SIDE	MOTOR	BRAKE	DIRECT. OF TERMINAL BOX	ROTATION			
S 1	130 (B)	40° C	6309ZZ	6309ZZ	6	3	A (LEFT)	CCW	MUNSELL N7	φ 56	ABOVE 150%

- NOTE: 1. THE BRAKE LEAD LINE HAS BEEN TAKEN OUT OF THE POWER-SUPPLY UNIT OF THE MOTOR ATTACHMENT.
 2. WITH POWER-SUPPLY UNIT FOR BRAKE. (OVER-EXCITATION TYPE)
 3. PLEASE REFER TO BD09178 FOR THE BRAKE CONNECTING WIRES.

	DRAWN	APPROVED
SCALE NTS		
DATE FEB. 15. '19		

CAD(2D)

(和文: BD27862)

MITSUBISHI ELECTRIC CORP., JAPAN
 NAGOYA WORKS

CHANGE			

図面
 番号
 DWG. **BD39187-***
 NO.